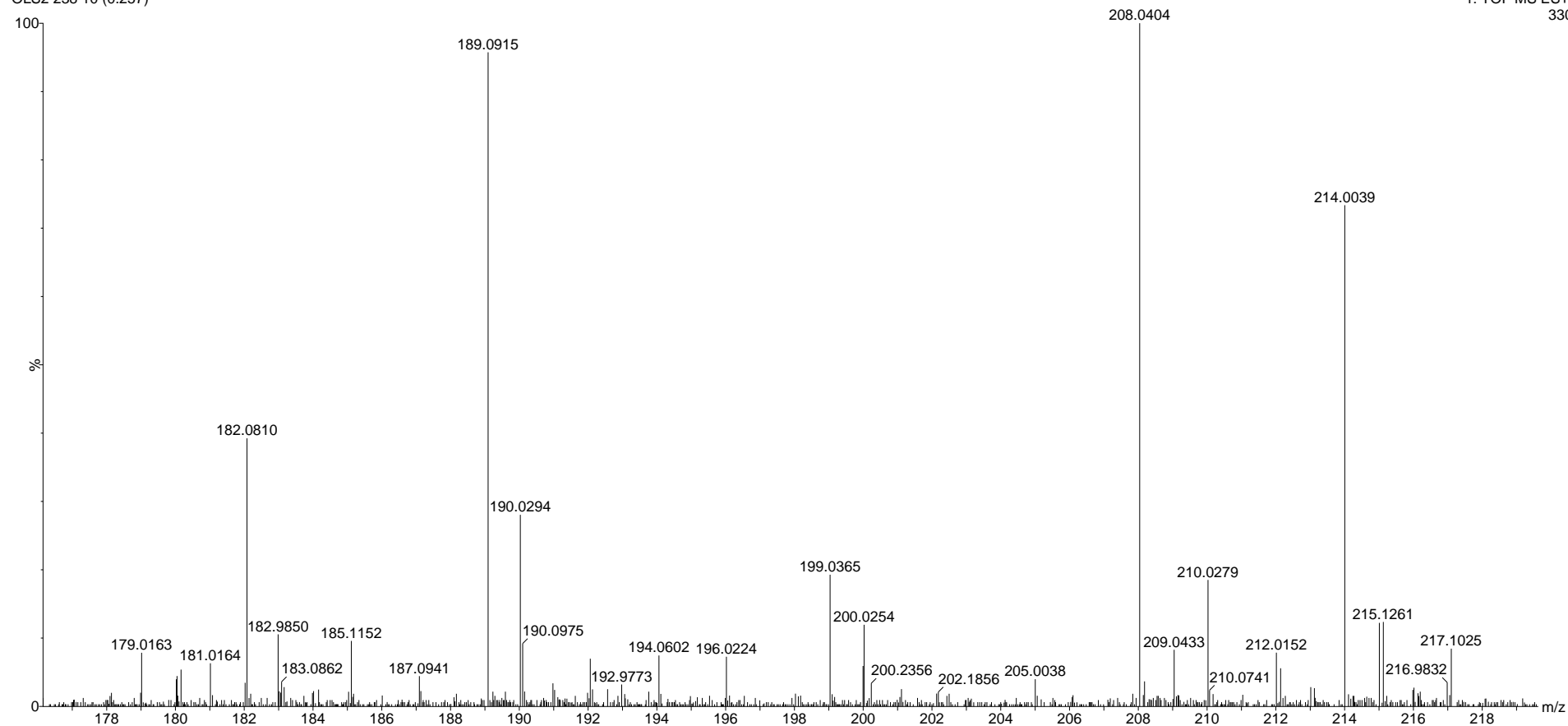


OLS2 238
OLS2 238 10 (0.257)

05-Jul-2024
1: TOF MS ES+
330



Elemental Composition Report for 189m/z

Single Mass Analysis

Tolerance = 5.0 PPM / DBE: min = -1.5, max = 100.0

Element prediction: Off

Number of isotope peaks used for i-FIT = 3

Monoisotopic Mass, Even Electron Ions

24 formula(e) evaluated with 1 results within limits (all results (up to 1000) for each mass)

Elements Used:

C: 1-30 H: 0-80 O: 0-10

Minimum: -1.5

Maximum: 5.0 10.0 100.0

Mass	Calc. Mass	mDa	PPM	DBE	i-FIT	i-FIT (Norm)	Formula
189.0915	189.0916	-0.1	-0.5	6.5	165.6	0.0	C12 H13 O2